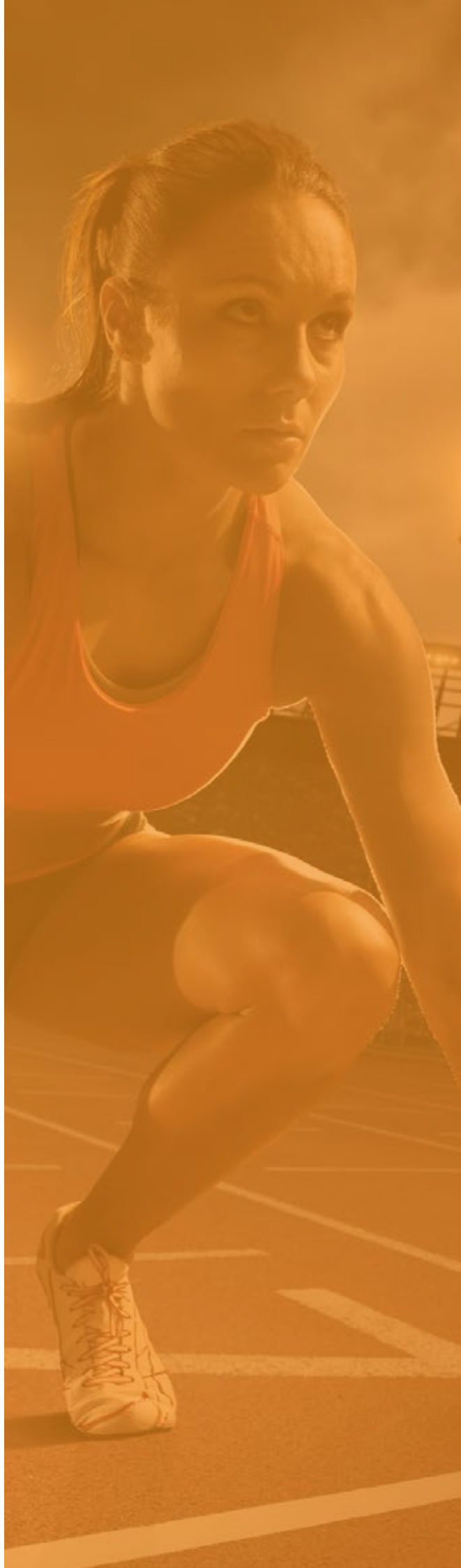




*Get ready to **win***



A female athlete is captured in a starting crouch on a track at night. She is wearing a red singlet and dark shorts. The scene is illuminated by stadium lights, creating a warm, golden glow. The background shows the stadium seating and a tall light tower.

new
led
e
qui
pmen
ts

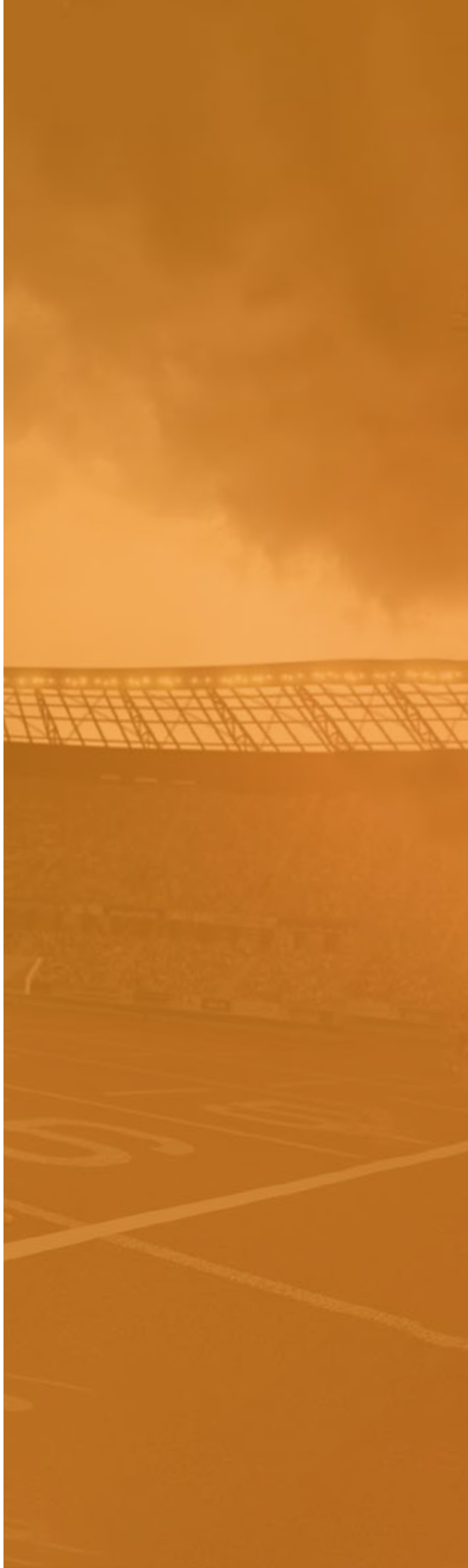


Get ready to win

- 04** **electra**
electro**therapy**
- 06** **sonora**
ultrasound**therapy**
- 08** **therma**
diathermal**therapy**
- 10** **pressa**
presso**therapy**
- 12** **lambda**
laser**therapy**
- 14** **tesla**
magnet**therapy**
- 16** **onda**
shock**wave**

what's **new**

- + High luminosity graphic touchscreen display
- + Intuitive icons interface
- + Controls of the unit made by one knob multipurpose encoder, keys or touchscreen
- + Stored therapeutic protocols inside
- + Customized programs
- + Possibility to upgrade through USB port



Waveforms current



Diadynamic

MF
MFS
CP
DF
DFS
CP



Faradic

Rectangular
Triangular
Exponential
Neofaradic
Trabert



Galvanic

Continuous
MF Galvanic



Impulsive

Rectangular
Triangular
Exponential
Biphasic



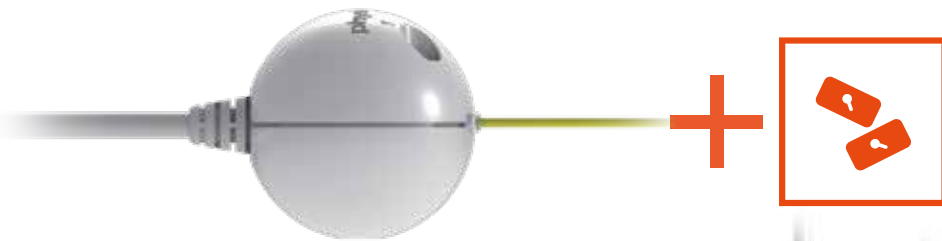
T.E.N.S.

Burst
Modulated
Random



Bipolar

Medium freq.
Russian
Bipolar IF
Tetrapolar
Isoplanar
Vectorial



WHAT'S NEW

- + Wide range of preset protocols
- + Customized programs
- + Planning sequence of treatment phases each channel allowed
- + Completely independent channels
- + Methods of safety control with deactivation of the output current in case of accidental detachment of the electrodes

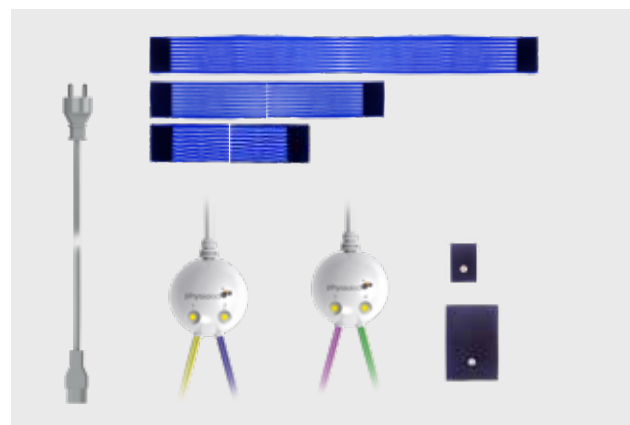


Main features

Max output direct current	30 mA
Max output pulse current	70 mA
Max output voltage	100 Vdc
Power supply	90-240 Vac/50-60 Hz
Electrical input power electra 2	60 VA
Electrical input power electra 4	90 VA

Standard Composition:

	electra 2	electra 4	
- Power supply cable 2 mt	1 pcs	1 pcs	00100.03
- Conductive rubber electrode with synthetic buckskin 80 x 120 cm	4 pcs	4 pcs	00607.01
- Conductive rubber electrode with synthetic buckskin 45 x 60 cm	4 pcs	4 pcs	00607.02
- Fasting bandaze 8 x 40 cm	2 pcs	2 pcs	00602.040
- Fasting bandaze 8 x 60 cm	2 pcs	2 pcs	00602.060
- Fasting bandaze 8 x 100 cm	1 pcs	1 pcs	00602.100
- Electra 1 - Electra 2 cables connections	1 pcs	1 pcs	ELCC12
Electra 3 - Electra 4 cables connections	-	1 pcs	ELCPM01



electra

electrotherapy

electra 2 code ELC002
electra 4 code ELC004

electra delivers different types of currents suited for most of the therapy used to treat pain syndromes and invigorating or hypertrophying treatments through passive gymnastics, and rehabilitation of norm innervated and/or denervated muscular tissues. Electra is implemented with more advanced technology that allows for **2 or 4** channels.

electra has Dynamic Current, which assures the success of the treatment of painful inflammatory conditions of muscles, articulations, and peripheral nerves. While in sporting medicine, the rapid resolution of traumas and hematomas. Faradic Current allows the stimulation of normal innervated muscles in every treatment. Pulse Current, thanks to a constant increment of the intensity with respect to time, can be used to stimulate partially innervated or denervated muscles.

Direct Current, which can be delivered singularly or mixed with dynamic, faradic, and pulse current, makes Electra useful for galvanizing, galvanic bath, and iontophoretic administration of drugs.

Bipolar Current allows the use of invigorating and rehabilitative muscular stimulation. The symmetrical bipolarity of the stimulating waves improves the sensory acceptability of the stimulation, due to the soft perception of the delivered currents, avoiding other drawbacks to the electrolytic action of the monopolar stimulation. Interferential Current, assure the transfer of low-frequency antalgic or motor stimulating current to deep tissue levels, through the aid of higher frequencies that reduce the cutaneous impedance with consequent diminution of problems of irritation of the epidermis.

SCAN HERE



READ MORE



dimensions in **mm**
 weight **4Kg**

sonora

ultrasoundtherapy

sonora ultrasound
code SNR001

sonora combi ultrasound+electroth
code SNR003

sonora cryo ultrasound+cryotherapy
code SNR005



sonora is a programmable unit for US transducers with working frequencies from 1 up to 3 MHz.

sonora has two optimized versions: The standard **sonora** with automatic tuning, it is used for ultrasound transducers in the range of 1 Mhz[1]3 MHz and **sonora combi**, with automatic tuning to use ultrasound transducers in the range of 1 MHz – 3 MHz coupled together with electrotherapeutic currents.

Through **sonora**, it is possible to obtain delivery of continuous or modulated ultrasound with programmable intensity and delivery time to fit the thermo-therapeutic deep treatment for different pathologic conditions. Sonora transducer handpieces can be water used.

sonora Cryo is equipment based on the synergy of two therapeutic techniques, cryo-therapy, and ultrasound therapy with strong amplification of the healing effects of the two single methods. Cold ultrasound therapy is highly effective for the treatment of inflammatory and painful states. The anti-inflammatory action of ultrasound is associated with the analgesic, anti-edema, and pain-relieving action of cryotherapy, generating different types of effects: thermal, mechanical, cavitation, biological, and phonophoresis. It is used as an anti-inflammatory, painkiller, anti-swelling, and to combat muscle contractures.



dimensions in mm
weight 4Kg

Waveforms current sonora combi currents available



Diadynamic
MF
MFS
CP
DF
DFS
CP



Faradic
Rectangular
Triangular
Exponential
Neofaradic
Trabert



Galvanic
Continuous
MF Galvanic



Impulsive
Rectangular
Triangular
Exponential
Biphasic



T.E.N.S.
Burst
Modulated
Random



Bipolar
Medium freq.
Russian
Bipolar IF
Tetrapolar
Isoplanar
Vectorial



sonora combi

electrotherapy



ultrasound



sonora cryo

ultrasound+cryotherapy



WHAT'S NEW

- + Wide range of preset protocols
- + Customized programs
- + Multi frequency handpieces
- + Automatic recognition of the connected accessory
- + Continuous or pulsated delivery
- + Associated with electrotherapy*

Main features

Output frequency	1.0 to 3.0 mHz
Max intensity	3.0 W/cm ²
Max output direct current	30 mA*
Max output pulse current	70 mA*
Max output voltage	100 Vdc*
Power supply	90-240 Vac / 50-60 Hz
Electrical input power	70 VA (sonora) / 100 VA (combi) 300 VA (cryo)

*only with combined US and ET version (COMBI)

SCAN HERE



READ MORE

Standard Composition:

- Power supply cable 2 mt
- Automatic frequency 1-3 MHz US handpiece-ø35 mm
- Conductive rubber electrode with synthetic buckskin 80 x 120 cm
- Conductive rubber electrode with synthetic buckskin 45 x 60 cm
- Fasting bandage 8 x 40 cm
- Fasting bandage 8 x 60 cm
- Fasting bandage 8 x 100 cm
- Electra 1 - Electra 2 cables connections
- US + CRYO 1-3 MHz ultrasound handpiece d.65 mm

	sonora	sonora combi	sonora cryo	
	1 pcs	1 pcs	1 pcs	00100.03
	1 pcs	1 pcs	-	SNRA35
	-	4 pcs	-	00607.01
	-	4 pcs	-	00607.02
	-	2 pcs	-	00602.040
	-	2 pcs	-	00602.060
	-	1 pcs	-	00602.100
	-	1 pcs	-	ELCC12
	-	-	1 pcs	SNRMC1



+physioled
physiotherapy



therma

diathermaltherapy

diathermal
code THR001



WHAT'S NEW

- + Wide range of preset protocols
- + Customized programs
- + Capacitive Mode for drainage and relaxing contractions with quite important heat effect.
- + Resistive Mode for biological stimulation with athermal or minimal heat effect



Main features

Max Power	150W/250VA
Working	450 kHz/550 KHz
Operative	Resistive/Capacitive
Power supply	90-240 Vac / 50-60 Hz
Electrical input power	300 VA

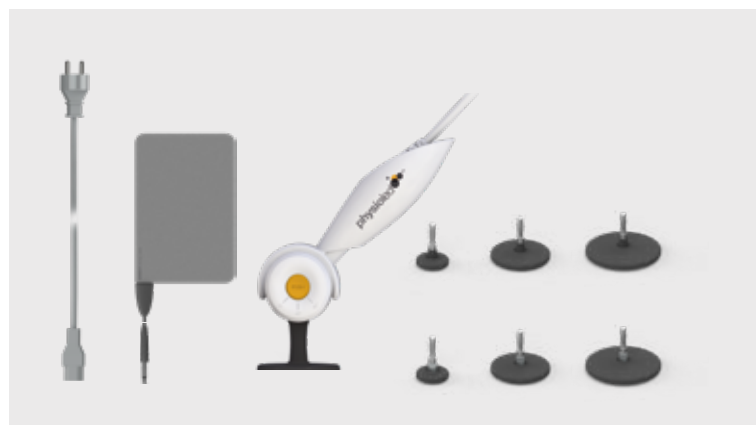
SCAN HERE



READ MORE

Standard Composition:

- Power supply cable 2 mt	1pcs	00100.03
- Steel neutral electrocode 160x240mm with cable 3 m	1pcs	00401.01
- Application for therma	1pcs	THRMA
- Set of capacitive and resistive head (3 Cap 24-48-62/3 Res 24-48-62)	1pcs	THRTECRO



3 positions
handle



therma is a new piece of equipment for Therapeutic Resistive and Capacitive Diathermal non-invasive treatment, which is prompt to generate, with the best effectiveness and without pain, endogenous hyperemia for draining and stimulating blood circulation in all the different cellular layers for lymphatic drainage, anti-inflammation effects, circulation improvement, and pain reduction. Stimulate the natural and physiological body reaction to the pathology and accelerate reparative processes, thanks to special applicators, it can deliver the proper energy into the different cellular layers. Therapeutic Resistive and Capacitive Diathermal treatment is the recent and more effective approach in diathermy treatment for all professional operators who are looking for something more than a traditional diathermy unit (microwaves or shortwaves). Therapeutic Resistive and Capacitive Diathermal is the technological and therapeutic evolution providing versatility, effectiveness, and therapeutic benefits that are hard to achieve with traditional diathermy devices. The treatment is like a massage during which it is possible to deliver energy to the patient who feels a comfortable warm



dimensions in mm
weight 5Kg



physioled
physiotherapy

WHAT'S NEW

- Stored therapeutic protocols for each connectable accessories
- Planning sequence of treatment phases
- Silent compressor
- Automatic deflating at the treatment end
- Fast accessories connection

Main features

Max output pressure	250 mmHg
Sector pressure range	30-90 mmHg
Number of sectors	8
Treatment mode	Time or Cycles
Power supply	115 or 230 Vac
Electrical input power	55 VA

SCAN HERE



READ MORE

7 inch touchscreen

Jacket Fisio AUTO 5 sectors

Arm Fisio AUTO 4 sectors

Duble legging Fisio AUTO 8 with marsupium



dimensions in mm
weight 6Kg

pressa is a modern and reliable compressive system of the new generation. The equipment is destined for physiotherapeutic treatments which are in demand for mechanical pressure massage for mechanical lymphatic draining. The **pressa** measurement exactness, the polyfunctionality of the planning system, and the action of the special physiological accessories, with overlapping sectors, it allows for effective lymph node unblocking

315 315 170 170 170 dimensions in mm weight 6Kgs before making the pressure massage. **pressa** has been realized using the most updated electronic technology which drives up to 8 sectors. The **pressa** unit uses a system of automatic recognition of the connected accessory which avoids unwanted errors in the selection of the protocol or of the program. **pressa** allows setting different working pressures for each single sector.



Standard Composition:

- Power supply cable 2 mt 1pcs 00100.03
- Duple legging Fisis AUTO 8 with marsupium 1pcs PRSGM8



lambda

lasertherapy

lambda *monodiodic* code LMB001M

lambda *exadiodic* code LMB001E

lambda is a programmable control IR LASER unit suited for regenerative bio-stimulating and antalgic treatments. It is possible to connect to **lambda** optional transducer handpiece. The transducers can have different dimensions and radiation power. This allows the operator to use the best handpiece accordingly with the chosen treatment. **lambda** has a security control system that automatically disables the LASER emission in the case of missed or wrong positioning of the emitting handpiece.

lambda YAG is a laser therapy equipment, which allows one to work in depth on different types of pathologies. The wavelength used is 1064nm. This, combined with the emission power, allows a good diffusion and the right absorption by human tissue, by combining an analgesic effect, anti-inflammatory effect, and tissue regeneration. lambda laser therapy lambda monodiodic code LMB001M

exadiodic lambda code LMB001E 00100.03 40100.99 LMBM030 LMBKRIC LMBE180 1pz 2pz - 1pz 1pz 1pz 2pz 1pz 1pz - - Power supply cable 2 mt - protective glasses - Handpiece with six 30W laser diodes - Remote interlock connector kit - Handpiece with six 30W laser diodes (180w) Standard Composition: lambda monodiodic lambda exadiodic lambda yag allows to work in two modalities: continuous and pulsed. The continuous emission mode is suitable for pathologies where the injury is at depth. It can trigger cellular bio-stimulation processes, and the process of tissue regeneration, reducing movement recovery times. The pulsed emission mode is suitable for pathologies with acute phase, to perform anti-inflammatory pathologies with low thermal effects. The pulsed emission mode is also suitable for fast tissue regeneration and the maintaining of the cellular balance. This allows controlled vasodilation and better recovery of the inflammatory process.



Standard Composition:

- Power supply cable 2 mt
- protective glasses
- Handpiece with six 30W pulsed laser diodes
- Remote interlock connector kit
- Handpiece with six 30W laser diodes (180w)

	lambda monodiodic	lambda exadiodic	
	1pz	1pz	00100.03
	2pz	2pz	40100.99
	1pz	-	LMBM030
	1pz	1pz	LMBKRIC
	-	1pz	LMBE180





lambda 2 exadiodic+monodiodic code LMB002

lambda yag yag codice LMB003

Main features *lambda*

Output frequency	0,5-10.000 Hz
Handpiece wavelenght	905 nm
Output pulse lenght	100 nsec
Power supply	90-240 Vac / 50-60 Hz
Electrical input power (VA)	20 VA (lambda) / 25 VA (lambda 2)

Main features *lambda yag*

Wavelenght	1064 nm
Laser power	up to 10W
Emission	Continuous, Pulsed
Light Guide	635 nm (2 mW)
Power supply	90-240 Vac / 50-60 Hz
Absorption	100 VA
Laser class	4

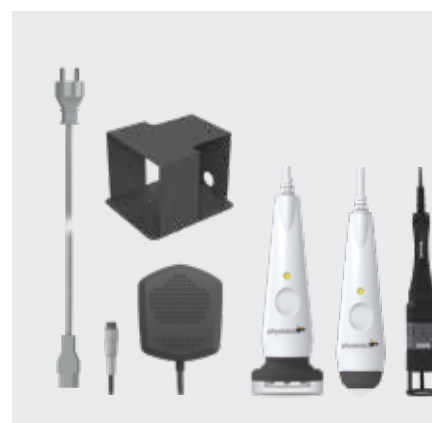


WHAT'S NEW

- + Wide range of preset protocols
- + Customized programs
- + Independent management of 2 different handpieces provided
- + Handpieces with one and six LASER emitters
- + Automatic scanning of the delivered frequency
- + Visualization of the delivered energy (Joule)
- + Warning signal on the handpiece lighted during energy delivering
- + Automatic recognition of the connected accessory

Standard Composition:

	lambda exadiodic + monodiodic	lambda yag	
- Power supply cable 2 mt	1 pcs	1 pcs	00100.03
- protective glasses	2 pcs	-	40100.99
- Handpiece with six 30W pulsed laser diodes	1 pcs	-	LMBM030
- Remote interlock connector kit	1 pcs	1 pcs	LMBKRIC
- Handpiece with six 30W laser diodes (180w)	1 pcs	-	LMBE180
- Patient laser protection	-	4 pcs	LMBEPP1
- Operator laser protection	-	1 pcs	LMBEPO1
- Handpiece LASER CW 10W 1064 nm	-	1 pcs	LMB1064.010
- Single foot switch	-	1 pcs	00304.00
- Single foot switch protection	-	1 pcs	00304.P0



tesla

magnetotherapy

tesla



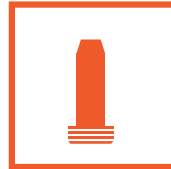
plates
code TSL001

tesla 2



plates+cylinder
code TSL002

tesla pulse



pulse
code TSL003

tesla is an ELF magneto therapeutic unit designed for professional applications. **tesla** generates a magnetic field (ELF) characterized by: Low frequency, Negligible electric field, Low radiated power, Negligible thermal effects, and High tissue penetration.

tesla has a graphic touchscreen display that allows the interactive control of the unit.

tesla 2 can have at the same time connected a couple of plain transducers and a cylindrical transducer or two cylindrical transducers. The outputs can be activated either contemporarily or once at a time.

tesla pulse is a device designed for professional applications for the treatment of osteoarticular pathologies.

tesla pulse can command a pair of flat transducers (optional) and a new handle of the pulsed magnetic field. Outputs can be activated individually.

tesla pulse in PULSE mode through the interchangeable circular head of the handpiece emits a pulsed magnetic field characterized by: Low frequency, negligible electric field, high magnetic pulsed field (1 Tesla) (Radiated Magnetic Pulse RAMP), negligible thermal effects, high penetration in tissues, this particular field results in non-invasive and non-painful applications, favoring draining and cellular normalization through tissue and cell bio-stimulation for the treatment important traumatic pathologies with or without edema, inflammatory and/or painful forms such as cervical arthrosis, lumbago, copolymeric periartthritis, sciatica, tendinitis, sports trauma (stretching, tearing, etc.)

tesla pulse has a touchscreen graphic display that allows interactive control of the unit.





Main features tesla / tesla 2

Output frequency	2 - 100 Hz
Max output level	100 / 10 Gauss/mT
Power supply	90-240 Vac / 50-60 Hz
Electrical input power	70 VA

SCAN HERE



READ MORE

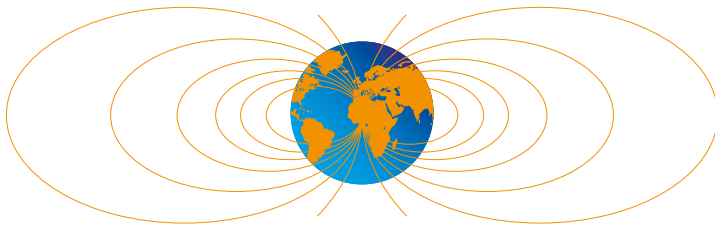
Main features tesla pulse

Output frequency	0,5 - 5 Hz
Max output level	10 kGauss (1T)
Power supply	90-240 Vac / 50-60 Hz
Electrical input power	120 VA

SCAN HERE



READ MORE



WHAT'S NEWS

- + Wide range of preset protocols
- + Customized programs
- + Automatic recognition of the connected accessory
- + Planning sequence of phases

Standard Composition:

	tesla	tesla 2	pulse	
- Power supply cable 2 mt	1 pcs	1 pcs	1 pcs	00100.03
- Plane Plate for magneto therapy	2 pcs	2 pcs	-	TSLP01
- Fasting bandaze 8 x 100 cm	1 pcs	1 pcs	1 pcs	00602.100
- Cylinder for magnetotherapy dia. 60 cm	-	1 pcs	-	TSLC60
- Handpiece magnetotherapy PULSE	-	-	1 pcs	TSLM01
- Capacitive Head D.48 mm with cover	-	-	1 pcs	THRTEC.48
- Capacitive Head D.62 mm with cover	-	-	1 pcs	THRTEC.62
- Trolley Tesla Pulse with arm	-	-	1 pcs	TSLTR002



onda

shockwave *onda*
code OND001

onda is a non-focal (radial) wave therapy device, which radically changes the therapeutic methodology of many musculoskeletal system disorders. Shockwave technology consists in generating an acoustic wave characterized by a high energy peak adjustable in a given frequency range.

An accelerated bullet in the handpiece, through electromagnetic impulse, generates a mechanical pressure wave that is transferred to a specific area by irradiating the tissue. Mechanical energy creates bio-stimulation reactions in the tissue, giving positive influencing in a wide range of orthopedic, physiotherapeutic, and analgic conditions.

onda represents the best compromise between performance and practicality, delivering up to 185 mJ MAX (comparable to around 6 bar of the pneumatic system) of variable frequency energy with a compact design to maximize the transportability of the unit.

It also decreases the painful feeling by better distribution of the pressurized waves, allowing the operator to obtain better therapeutic feedback. The high-intensity delivery allows acting on tendon osteo calcifications improving the biological repair mechanism.



Therapeutic Indications

- Bunions
- Coxarthrosis
- Epicondylitis / Epitrocleitis
- Stress FractureFrom Periostitis
- Active Periostitis
- Risoisoarthrosis
- Tendinitis and tendinopathy
- Tendoperiostit



dimensions in **mm**
weight **5Kg**

WHAT'S NEW

- + Wide range of preset protocols
- + Customized programs
- + Heads with different diameters

SCAN HERE



READ MORE

Main features

Energy	60÷185 mJ
Working mode	4 Modality (continuous/4/8/12 pulse)
Working Frequency	1÷22 Hz
Power supply	90-240 Vac / 50-60 Hz
Max output power	250 VA
Applicators	6/15/25 mm



Standard Composition:

- Power supply cable 2 mt	1 pcs	00100.03
- Handpiece Onda	1 pcs	ONDM01
- Handpiece protection Onda	5 pcs	ONDMP01
- Head D.6 mm for handpiece ONDA	1 pcs	ONDMT05
- Head D.15 mm for handpiece ONDA	1 pcs	ONDMT15
- Head D.25 mm for handpiece ONDA	1 pcs	ONDMT25
- Single foot Switch	1 pcs	00304.00



+physioled
physiotherapy



*Get
ready
to win*



LED SpA

Via Selciatella, 40
04011 Aprilia (LT)
ITALY

www.led.it

info@led.it



[linkedin.com/company/led-spa/](https://www.linkedin.com/company/led-spa/)



[@ledspaofficial](https://www.facebook.com/ledspaofficial)



[LED SpA](https://www.youtube.com/LED%20SpA)

Tel. +39 06 92870045

Fax. +39 06 92870046

P.iva 00704680602



www.led.it



ED 2022|10