



Justrite Safety Group

Wet Areas - Hygienic Mats

346 Sani-Trax™



325 B&B MEDICAL VOSING 11 MM

Wet/Dry Areas - Heavy duty

346 Sani-Trax™

This mat cleans and sanitizes shoes, recommended at entrances to all food processing areas. Thousands of flexible fingers provide an automatic scrubbing action that dislodges contaminants from footwear. As traffic passes, rubber tips bend under pressure to immerse soles in disinfectant solution, a double action that keeps contamination from reaching food processing areas.

Convenient mat size fits most doorways. Suction cups on underside prevents mat from shifting.

Recommended use:

- Heavy duty
- Industrial Environments
- For placement in manufacturing plants, assembly lines, picking, packing and logistics warehouses, individual work stations.

Specifications:

- Natural rubber
- Bevelled rubber borders on all four sides
- Overall thickness: 19 mm
- Weight: 10,8 kg/m²
- Free of DOP, free of DMF, free of ozone depleting substances, free of silicone and free of heavy metals

Standard sizes:

- 61cm x 81cm

Colours:

- Black

Cleaning instructions:

- Hose off with water



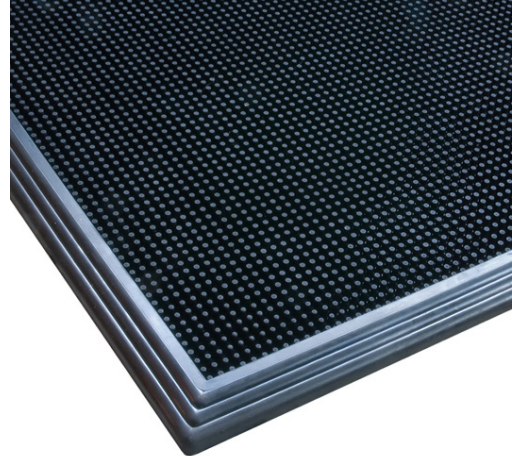
PRODUCT TESTING



GOOD BETTER BEST

346 Sani-Trax™ (black)

Art. nr.	Dimensions	Weight kg
346S2432BL	61cm x 81cm	6,2



346 Sani-Trax™

GENERAL DESCRIPTION

Type	Wet Areas - Hygienic Mats
Description	Disinfecting foot bath entrance mat.
Recommended use	Wet/Dry Areas
Surface	Flexible rubber bristles
Category	Ergonomic, Anti-fatigue Safety Matting Heavy duty
Colours	Black
Edges	Bevelled rubber borders on all four sides

TECHNICAL SPECIFICATIONS

Material	Natural rubber
Process	Compression Moulding
Total weight	10,8 kg/m ²
Overall thickness	19 mm

TESTS

Sustainability	Recyclable material
----------------	---------------------

DIMENSIONS

Standard sizes	Full rolls	Custom lengths
61cm x 81cm		