

Smart Tecar

Capacitive and Resistive energy transfer

> Professional program

> Various handle options

> Real-time parameter display

> Various body parts selections



SmartTecar

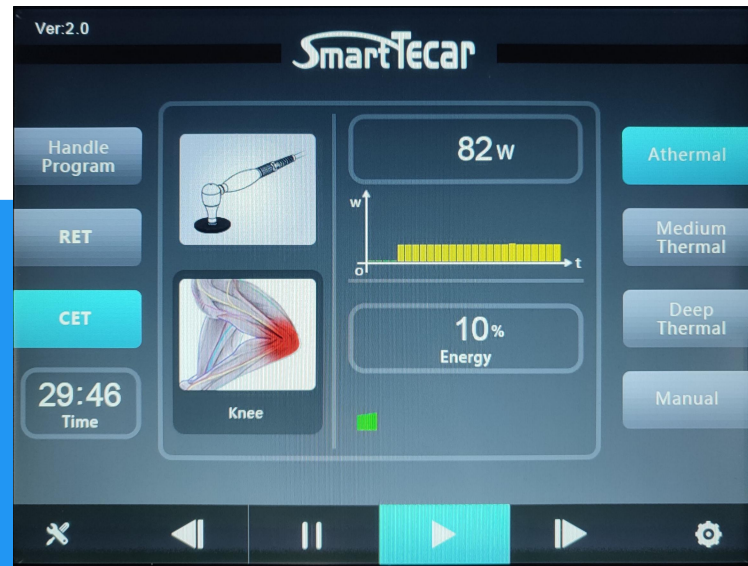


TECHNICAL PARAMETER

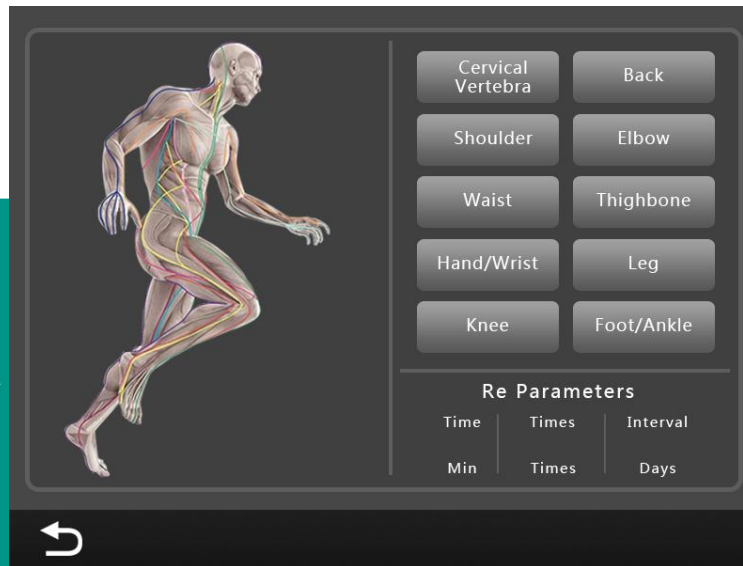
MODEL	SMART TECAR
RF Frequency	300-448KHZ
Maximum Power	300W
Heads Size	20/40/60MM
Package Dimension	500*450*370MM
Package Weight	15KG Alu Box

Smart Program

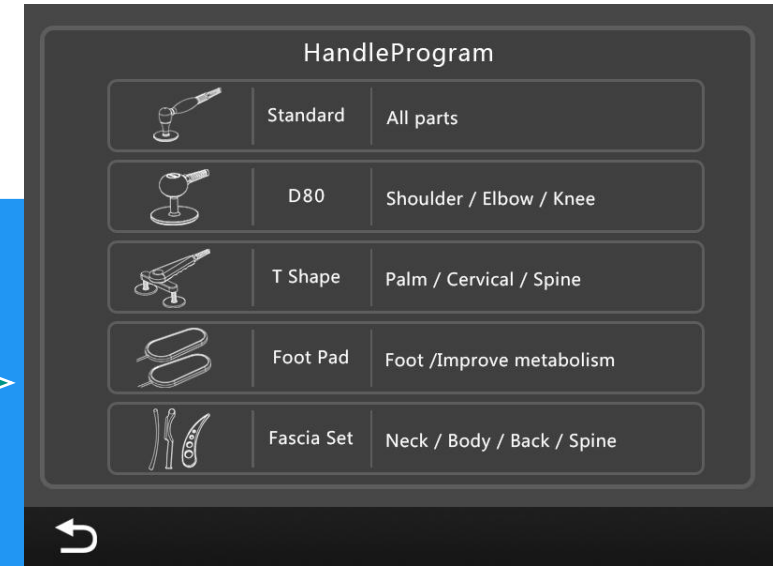
This smart program show more detail and process and help users operating more professional



- Real-time parameter display
- 3 optional patterns, the athermal, medium thermal and deep thermal



- Various body parts selections
- Each part with detailed treatment Recommended



- Various handle options, each handle special for different body part

Configuration

Handpiece



Optional Handpiece:

D80



Foot Pad



T Shape



Fascial Set



TECAR therapy as a system of Capacitive and Resistive electric transfer ,which is one of the methods used in diathermy, was developed as a form of deep thermotherapy ,delivers radiofrequency (RF) energy,which passes between active electrode and inactive electrode, and generates heat in the human body .

Smart Tecar Advantages

Double frequency

300KHZ and 448KHZ make RET and CET really have deep and shallow differences. The deeper penetration of RET can reach 10CM without energy loss

High power

In terms of time, similar products are around 80W. Our maximum power is 300W, and practical power is 250W. High power means that the internal components must be of good quality.



Patent appearance

Unique appearance design

Handle diversification

Optional double 80MM handle allows better flexibility in operation and better physiotherapy effect.

Large Screen

10.4-inch LED touch screen

Application For Smart Tecar

CET HANDLE

Operation depth:3-4CM
Application:tissue containing a high content of electrolytesfacial, muscle and soft tissue.



RET HANDLE

Operation depth:8-10CM

Application: higher resistance such as bones, tendons, and joints .

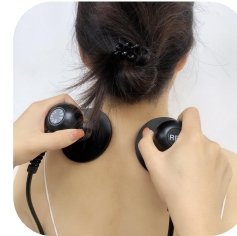


Optional handpieces application

D80 handle



- shoulder
- elbow
- knee



T Shape handle



- spine
- palm
- cervical



Facial Set



- neck
- body
- back
- spine



Foot Pad



- Foot
- improve metabolism



Tecar Effect

The heat speeds up metabolism. This causes blood to flow faster and to become more oxygenated. The result is that more oxygen, and other healing properties of your body's natural systems, are rushed to the site. The waste is also removed more quickly. The overall result is that your pain is reduced significantly, and the injury is healed more quickly



Treatable symptoms

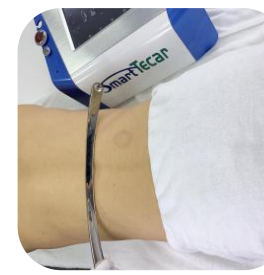


Physical
Therapy

- Facial management , Loss fat
- Postpartum repair, Dispelling Cold
- Provides physical immunity
- Muscular pain
- Sports injury
- Myotenositis
- Scar tissue
- Sprains
- Pelvic floor rehabilitation
- chronic pain

Rehabilitation

Pain relief



Service

1

OEM SERVICE

2

ODM SERVICE

3

TECHNOLOGY CUSTOMIZE

4

EXTERNAL CASE DESIGN
AND CUSTOMIZE

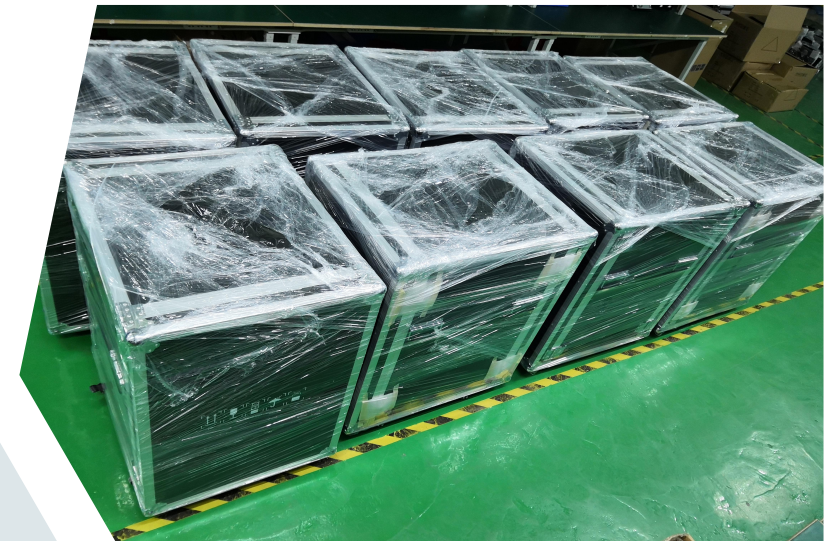
5

LOGO DESIGN AND
CUSTOMIZE

6

PACKAGE CUSTOMIZE

Smart Tecar



Thank You

